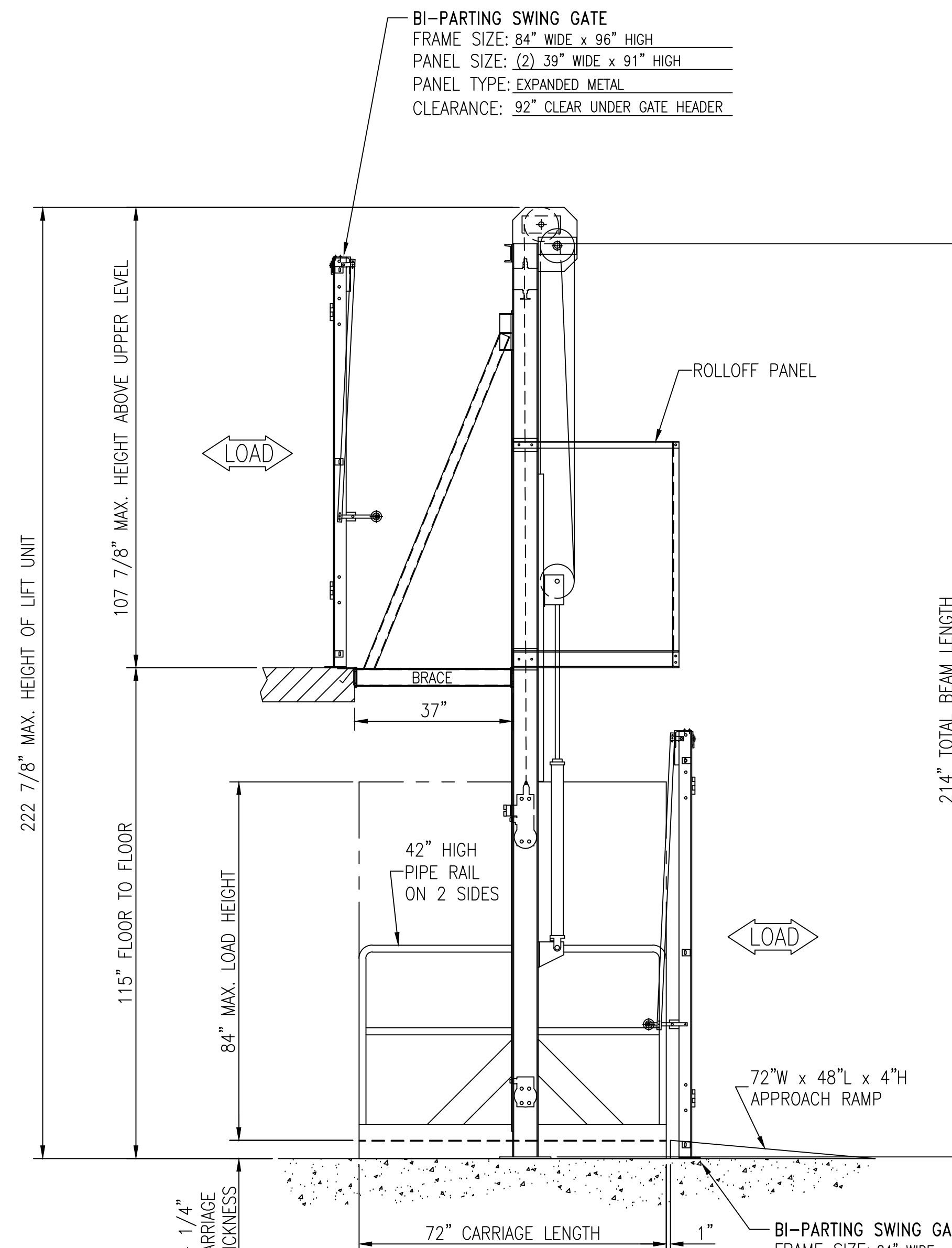


FRONT ELEVATION



SIDE ELEVATION

HYDRAULIC LIFT SPECIFICATIONS

MODEL: HLS-3
 CAPACITY: 2500 LBS.
 SPEED: 20 FPM
 CYLINDER: 3 1/2"Ø x 42"
 MAIN FRAME: W6" x 15#
 WHEELS: 5 7/16" PHENOLIC
 DECK: SMOOTH
 PAINT: WILDECK GRAY W/ RED CARRIAGE

UNLOADING OF EQUIPMENT:
 AT THE SITE BY: _____ OTHERS
 INSTALLATION BY: _____ OTHERS
 SAFETY ENCLOSURES BY: _____ WILDECK
 GATES BY: _____ WILDECK
 INTERLOCKS BY: _____ WILDECK
 COMPLETE WIRING OF UNIT
 FROM DISCONNECT BY: _____ OTHERS
 SITE PREP BY: _____ OTHERS

APPROVER PLEASE NOTE

BY SIGNING THIS DRAWING, YOU ARE VERIFYING THAT THE LIFT EQUIPMENT DETAILED ON THIS DRAWING WILL FIT INTO THE JOB SITE THRU EXISTING DOORS AND/OR HALLWAYS.

OVERALL CARRIAGE WIDTH: _____ 76 1/4"
 OVERALL CARRIAGE LENGTH: _____ 72"
 OVERALL CARRIAGE HEIGHT: _____ 92"
 LONGEST PIECE: _____ 223"

ELECTRICAL SPECIFICATIONS

VOLTAGE AT EQUIPMENT

VOLTAGE: **460 VAC, 3 PHASE, 60 HERTZ**

CONTROLS

TYPE: (2) 3-BUTTON MOM. CONTACT
 VOLTAGE: 24 VAC

POWER UNIT

HORSE POWER: 5 HP - T.E.F.C.
 TOTAL FULL LOAD CURRENT: 6.8 AMP
 REQUIRES CLASS J TIME-DELAY FUSE: 10 AMP
 STARTING CURRENT: 42 AMP

* 97% OF VOLTAGE TO BE HELD DURING MOTOR STARTS *

FUSED (TIME DELAY TYPE) LOCKABLE DISCONNECT TO BE LOCATED WITHIN 10 FT. OF LIFT (BY OTHERS).

NOTE:

THIS LIFT IS DESIGNED TO MEET ANSIS/ASME B20.1 SAFETY STANDARDS (CONVEYORS), GATE INTERLOCKS, AND SAFETY ENCLOSURES ARE MANDATORY PER ANSI AND OSHA STANDARDS. THE LIFT IS A FREIGHT CONVEYOR TO BE USED FOR THE MOVEMENT OF MATERIAL ONLY.

STANDARD 8'-0" HIGH ENCLOSURES ARE REQUIRED BY ASME B20.1 TO PREVENT INADVERTENT PHYSICAL CONTACT WITH THE MOVING VRC. SHOULD THE LOADING ON THE CARRIAGE BE SUCH THAT PARTS MAY FALL FROM THE CARRIAGE WHILE THE VRC IS MOVING, ADDITIONAL ENCLOSURES MAY BE REQUIRED. PLEASE CONTACT WILDECK.

THIS DRAWING IS SUBMITTED FOR YOUR APPROVAL. IT REPRESENTS THE EQUIPMENT AS IT WILL BE CONSTRUCTED. SITE DIMENSIONS ARE FOR REFERENCE ONLY, AND WILDECK CAN NOT ACCEPT RESPONSIBILITY FOR THEIR ACCURACY. PLEASE VERIFY THAT THE EQUIPMENT FITS!

PLAN AND DIMENSIONS SHOWN ARE:

APPROVED APPROVED AS NOTED
 NOT APPROVED - REVISE AND RESUBMIT

SIGNATURE _____
 COMPANY _____
 DATE _____

ELECTRICAL SPECIFICATIONS SHOWN ARE:

APPROVED APPROVED AS NOTED

SIGNATURE _____
 COMPANY _____
 DATE _____

NO FABRICATION CAN BE SCHEDULED OR BEGIN UNTIL A SIGNED COPY OF THESE DRAWINGS MARKED "APPROVED" OR "APPROVED AS NOTED" ARE RECEIVED BY WILDECK. ALL DRAWINGS MUST BE SIGNED BY WILDECK'S CUSTOMER.

REQUESTED SHIP DATE: _____

FINAL SHIP DATE WILL BE CONFIRMED BY WILDECK UPON RECEIPT OF "APPROVED" OR "APPROVED AS NOTED" DRAWINGS.

THIS SIGNATURE INDICATES THAT THE SITE VOLTAGE AND OTHER ELECTRICAL SPECIFICATIONS SHOWN ON THIS DRAWING, HAVE BEEN REVIEWED, AND ARE CORRECT FOR THE FACILITY WHERE THIS EQUIPMENT IS TO BE INSTALLED.

WILDECK, INC. RESERVES PROPRIETARY RIGHTS TO THIS DRAWING AND DATA SHOWN THEREON. SAID DRAWING AND/OR DATA ARE **CONFIDENTIAL** AND ARE NOT TO BE USED OR REPRODUCED FOR ANY PURPOSE WITHOUT THE WRITTEN CONSENT OF WILDECK, INC.

| | | | |
|-----|-------|-----------------------|-----|
| NO: | DATE: | REVISION DESCRIPTION: | BY: |
| | | | |
| | | | |
| | | | |



405 COMMERCE ST. - WAUKESHA, WI 53186
 P.O. BOX 88 - WAUKESHA, WI 53187
 PHONE (262) 549-4000 - FAX (262) 549-7703
 WWW.WILDECK.COM

CUSTOMER: **STORAGE SOLUTIONS INC.**

JOB: _____
 LOCATION: _____

TITLE: **GENERAL ARRANGEMENT DRAWING FOR VRC UNIT**

DRAWN: **BRT** DATE: **7-11-08** DRAWING NUMBER: **GA-20366** SHEET: **1** OF: **1**
 OK: **RSC** SCALE: **N.T.S.**